



The Global Language of Business

# Logistics Inventory Report Request and Report Business Message Standard (BMS)

*Release 3.4.1, Draft, Nov 2019*



## Document Summary

| Document Item    | Current Value   |
|------------------|---|
| Document Name    | Logistics Inventory Report Request and Report Business Message Standard (BMS) |
| Document Date    | Nov 2019  |
| Document Version | 3.4.1   |
| Document Issue   | 1   |
| Document Status  | Draft   |

## Work Request Reference

| Date of WR Submission to GSMP: | WR Submitter(s):  | Refer to Work Request (WR) Number(s): |
|--------------------------------|-------------------|---------------------------------------|
| 25-Jun-2014                    | GS1 Global Office | 14-000110                             |
| 11-Mar-2015                    | GS1 Germany       | 15-000046                             |
| 12-Jul-2016                    | GS1 Global Office | 16-000340                             |
| 03-Oct-2018                    | GS1 GO            | 18-000319                             |

## Business Requirements Document (BRAD) Reference

| BRAD Title                       | BRAD Issue Date | BRAD Version |
|----------------------------------|-----------------|--------------|
| Collaborative Receipt Settlement | 13-May-2006     | 0.0.15       |

## Document Change History

| Date of Change | Version                              | Changed By      | Reason for Change | Summary of Change      |
|----------------|--------------------------------------|-----------------|-------------------|------------------------|
| 12-Jan-2012    | BMS 3.0 – Issue 1                    | Mark Van Eeghem | BMS Release 3.0   | See summary of changes |
| 01-May-2013    | BMS 3.1 – Issue 1                    | Coen Janssen    | BMS Release 3.1   | See summary of changes |
| 15-Sep-2014    | BMS 3.2 – Issue 1                    | Ewa Iwicka      | BMS Release 3.2   | See summary of changes |
| 01-Mar-2017    | BMS 3.3 – Issue 1                    | Ewa Iwicka      | BMS Release 3.3   | See summary of changes |
| 15-Oct-2018    | BMS 3.4 – Draft for community review | Ewa Iwicka      | BMS Release 3.4   | See summary of changes |
| 08-Nov-2019    | BMS 3.4.1 – Issue 1                  | Radhika Chauhan | BMS Release 3.4.1 | See summary of changes |



---

## Disclaimer

GS1®, under its IP Policy, seeks to avoid uncertainty regarding intellectual property claims by requiring the participants in the Work Group that developed this **Logistics Inventory Report Request and Report Business Message Standard (BMS)** to agree to grant to GS1 members a royalty-free licence or a RAND licence to Necessary Claims, as that term is defined in the GS1 IP Policy. Furthermore, attention is drawn to the possibility that an implementation of one or more features of this Specification may be the subject of a patent or other intellectual property right that does not involve a Necessary Claim. Any such patent or other intellectual property right is not subject to the licencing obligations of GS1. Moreover, the agreement to grant licences provided under the GS1 IP Policy does not include IP rights and any claims of third parties who were not participants in the Work Group.

Accordingly, GS1 recommends that any organization developing an implementation designed to be in conformance with this Specification should determine whether there are any patents that may encompass a specific implementation that the organisation is developing in compliance with the Specification and whether a licence under a patent or other intellectual property right is needed. Such a determination of a need for licencing should be made in view of the details of the specific system designed by the organisation in consultation with their own patent counsel.

THIS DOCUMENT IS PROVIDED "AS IS" WITH NO WARRANTIES WHATSOEVER, INCLUDING ANY WARRANTY OF MERCHANTABILITY, NONINFRINGEMENT, FITNESS FOR PARTICULAR PURPOSE, OR ANY WARRANTY OTHERWISE ARISING OUT OF THIS SPECIFICATION. GS1 disclaims all liability for any damages arising from use or misuse of this Standard, whether special, indirect, consequential, or compensatory damages, and including liability for infringement of any intellectual property rights, relating to use of information in or reliance upon this document.

GS1 retains the right to make changes to this document at any time, without notice. GS1 makes no warranty for the use of this document and assumes no responsibility for any errors which may appear in the document, nor does it make a commitment to update the information contained herein.

GS1 and the GS1 logo are registered trademarks of GS1 AISBL.

# Table of Contents

|          |   |           |
|----------|---|-----------|
| <b>1</b> | <b>Business Domain View</b>                           | <b>5</b>  |
| 1.1      | Introduction  | 5         |
| 1.2      | References  | 5         |
| <b>2</b> | <b>Business Context</b>                               | <b>5</b>  |
| <b>3</b> | <b>Business Transaction View</b>                      | <b>6</b>  |
| 3.1      | Business Transaction – Issue Inventory Report Request | 6         |
| 3.2      | Business Transaction – Issue Inventory Report         | 7         |
| <b>4</b> | <b>Business Information View</b>                      | <b>8</b>  |
| 4.1      | Logistics Inventory Report Request (message)          | 8         |
| 4.2      | Logistics Inventory Report (message)                  | 11        |
| 4.3      | Logistics Inventory Report Inventory Location         | 13        |
| 4.4      | Enumerations (message specific)                       | 16        |
| 4.4.1    | LogisticsInventoryReportTypeEnumeration               | 16        |
| 4.5      | Code Lists  | 16        |
| <b>5</b> | <b>Business Message Examples</b>                      | <b>17</b> |
| 5.1      | Example 1   | 17        |
| 5.2      | Example 2   | 19        |
| <b>6</b> | <b>Implementation Considerations</b>                  | <b>22</b> |
| 6.1      | User Guide  | 22        |
| 6.2      | Message Specific Considerations                       | 22        |
| <b>7</b> | <b>Summary of Changes</b>                             | <b>23</b> |
| 7.1      | BMS Release 3.1                                       | 23        |
| 7.2      | BMS Release 3.2                                       | 23        |
| 7.3      | BMS Release 3.3                                       | 24        |
| 7.4      | BMS Release 3.4                                       | 25        |
| 7.5      | BMS Release 3.4.1                                     | 25        |
| <b>8</b> | <b>Appendices</b>                                     | <b>25</b> |
| <b>9</b> | <b>Acknowledgements</b>                               | <b>25</b> |
| 9.1      | Work Group  | 25        |
| 9.2      | Development Team Members                              | 27        |

# 1 Business Domain View

## 1.1 Introduction

### Message Definition

#### Logistics Inventory Request Message Definition

The Logistics Inventory Request message enables a party to request an inventory report from another party, using specific selection criteria.

#### Logistics Inventory Report Message Definition

The Logistics Inventory Report enables a party to report on inventory status and events as registered in his system.

### Principles

These messages support the inventory management process.

## 1.2 References

[LIM] GS1 Logistics Interoperability Model, 1.0, GS1 2007

[BRAD\_WIM] BRAD Warehousing Inventory Management, 1.0, GS1 2012

[BMS\_Shared] BMS Shared Common Library, 3.4, GS1 2016

[BMS\_eCom] BMS eCom Common Library, 3.4, GS1 2016

[BMS\_Warehousing] BMS Warehousing Common Library, 3.4, GS1 2016

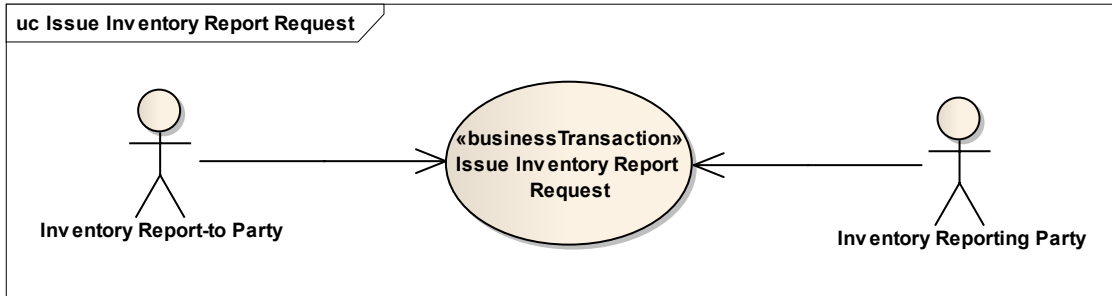
# 2 Business Context

| Context Category     | Value(s)                          |
|----------------------|-----------------------------------|
| Industry             | All                               |
| Geopolitical         | All                               |
| Product              | All                               |
| Process              | Warehousing – Outbound Operations |
| System Capabilities  | GS1 System                        |
| Official Constraints | None                              |

### 3 Business Transaction View

#### 3.1 Business Transaction – Issue Inventory Report Request

##### Use case diagram



##### Use case description

|                                |  |
|--------------------------------|--|
| <b>Use Case Name</b>           | Issue Inventory Report Request   |
| <b>Use Case Description</b>    | The Inventory Report-to Party informs the Inventory Reporting Party that an inventory report is requested.   |
| <b>Actors (Goal)</b>           | Inventory Report-to Party<br>Inventory Reporting Party   |
| <b>Performance Goals</b>       | Not applicable   |
| <b>Preconditions</b>           | none   |
| <b>Post conditions</b>         | The Inventory Reporting Party has been informed on the report request.   |
| <b>Main Scenario</b>           | <ul style="list-style-type: none"> <li>▪ Inventory Report-to Party sends the request to the Inventory Reporting Party.</li> <li>▪ Inventory Reporting Party receives the request.</li> </ul> |
| <b>Alternative Scenario(s)</b> | Not applicable   |
| <b>Related Requirements</b>    |  |
| <b>Related Rules</b>           |  |

##### Activity diagram

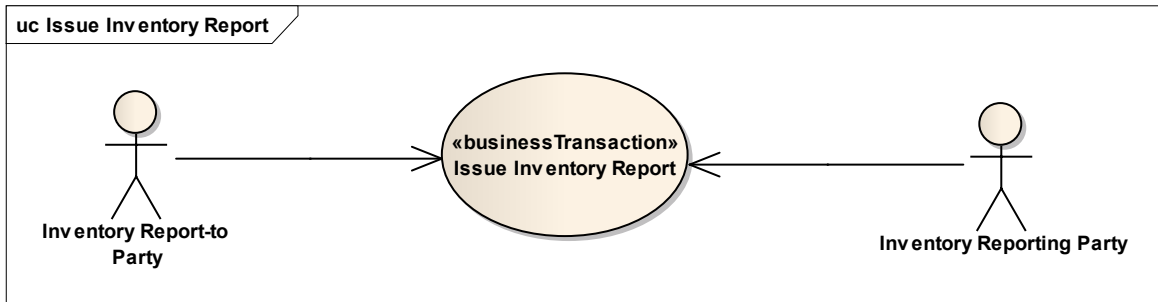
Not applicable

##### Communication diagram



### 3.2 Business Transaction – Issue Inventory Report

#### Use case diagram



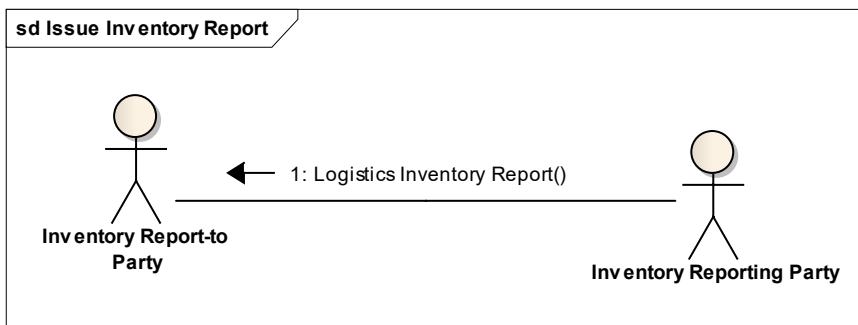
#### Use case description

|                                |   |
|--------------------------------|---|
| <b>Use Case Name</b>           | Issue Inventory Report  |
| <b>Use Case Description</b>    | The Inventory Reporting Party provides the Inventory Report-to Party with an inventory report.  |
| <b>Actors (Goal)</b>           | Inventory Report-to Party<br>Inventory Reporting Party  |
| <b>Performance Goals</b>       | Not applicable  |
| <b>Preconditions</b>           | (Optional) The Inventory Reporting Party has received an Inventory Report Request   |
| <b>Post conditions</b>         | The Inventory Report-to Party has received the report.  |
| <b>Main Scenario</b>           | <u>Based on a report request by the Inventory Report-to Party:</u> <ul style="list-style-type: none"> <li>■ Inventory Reporting Party generates the report.</li> <li>■ Inventory Reporting Party sends the report to the Inventory Report-to Party.</li> <li>■ Inventory Report-to Party receives the report and processes it in his system.</li> </ul> |
| <b>Alternative Scenario(s)</b> | <u>Periodical report:</u><br>Same steps as in main scenario<br><u>Ad-hoc report initiated by Inventory Reporting Party:</u><br>Same steps as in main scenario   |
| <b>Related Requirements</b>    |   |
| <b>Related Rules</b>           |   |

#### Activity diagram

Not applicable

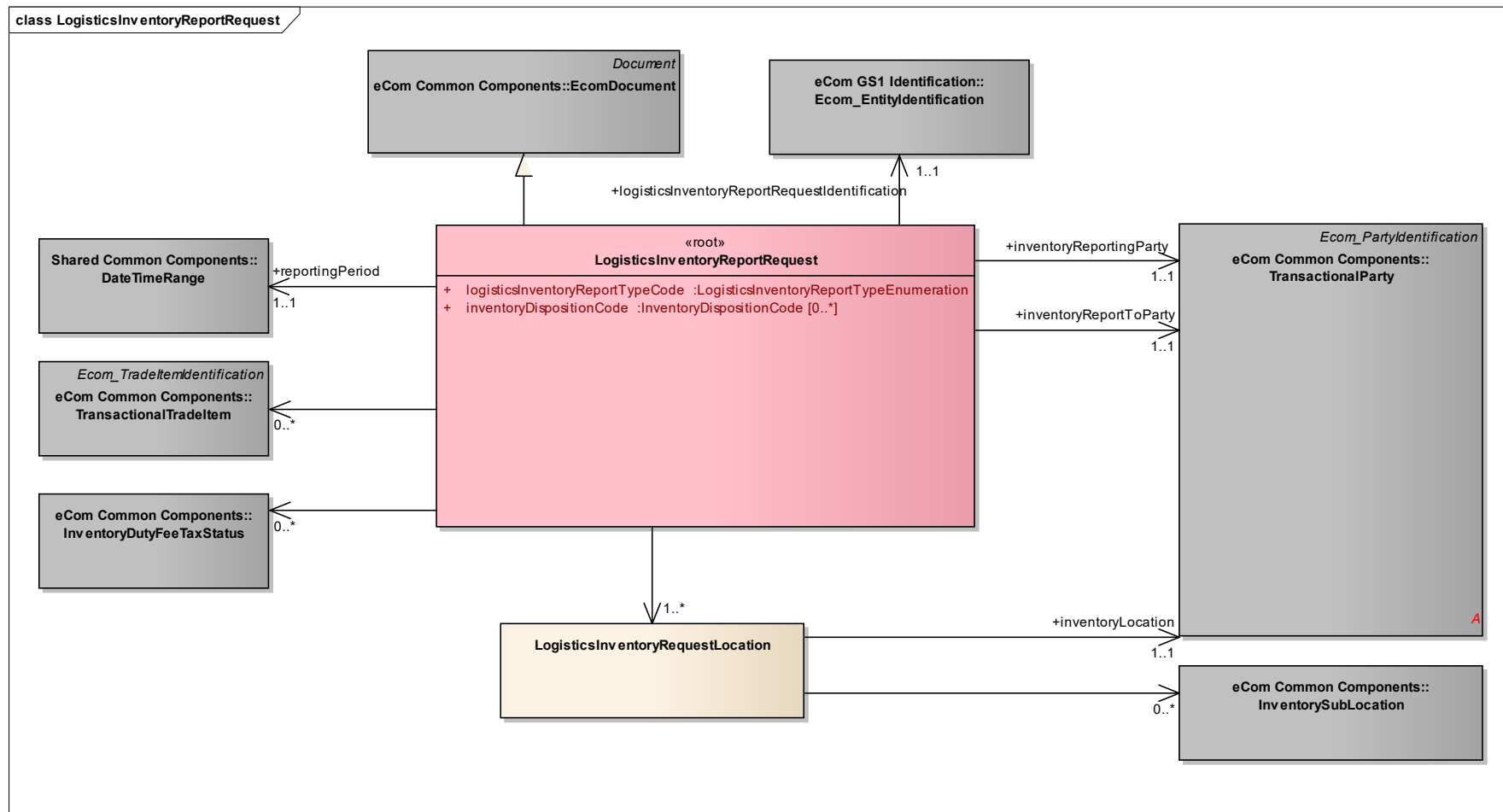
#### Communication diagram



## 4 Business Information View

### 4.1 Logistics Inventory Report Request (message)

#### Class diagram







**GDD report**

The content of the LogisticsInventoryReportRequest class, its structure and component definitions can be accessed in the Global Data Dictionary: [http://apps.gs1.org/GDD/bms/Version3\\_3/Pages/bieDetails.aspx?semanticURN=urn:gs1:gdd:bie:LogisticsInventoryReportRequest](http://apps.gs1.org/GDD/bms/Version3_3/Pages/bieDetails.aspx?semanticURN=urn:gs1:gdd:bie:LogisticsInventoryReportRequest)

| Content                         | Attribute / Role                              | Datatype / Secondary class              | Multiplicity | Definition  | Requirements                        |
|---------------------------------|---|---|--------------|---|-------------------------------------|
| LogisticsInventoryReportRequest |   |   |              | The Logistics Inventory Report Request enables a party (the inventory report to party) to request information on inventory levels and inventory changes to another party (the inventory reporting party). |                                     |
| Association                     |   | InventoryDutyFeeTaxStatus               | 0..*         | The inventory duty, fee or tax status on which inventory information is being requested.  | [brad-wim:invrpr-10,11]             |
| Association                     | reportingPeriod                               | DateTimeRange                           | 1..1         | The time period for which the inventory information is being requested.   | [brad-wim:invrpr-5]                 |
| Association                     |   | TransactionalTradeItem                  | 0..*         | The trade items on which inventory information is being requested.  | [brad-wim:invrpr-6]                 |
| Association                     |   | LogisticsInventoryRequestLocation       | 1..*         | Contains the inventory location and related sub-locations for which inventory information is being requested.   |                                     |
| Association                     | inventoryReportingParty                       | TransactionalParty                      | 1..1         | The identification of the party reporting about the inventory.  | [brad-wim:invrpr-2]                 |
| Generalization                  |   | EcomDocument                            |              | Basic information about the content of the message including version number, creation date and time.  | WR 14-000110                        |
| Association                     | logisticsInventoryReportRequestIdentification | Ecom_EntityIdentification               | 1..1         | Unique identification of the logistics inventory report request, assigned by the inventory report to party.   | [brad-wim:invrpr-1]<br>WR 15-000314 |
| Association                     | inventoryReportToParty                        | TransactionalParty                      | 1..1         | The identification of the party to which the inventory is being reported.   | [brad-wim:invrpr-2]                 |
| Attribute                       | logisticsInventoryReportTypeCode              | LogisticsInventoryReportTypeEnumeration | 1..1         | Code specifying the type of report that is requested.   |                                     |
| Attribute                       | inventoryDispositionCode                      | InventoryDispositionCode                | 0..*         | Denotes the business states of trade items for which information is being requested.  |                                     |



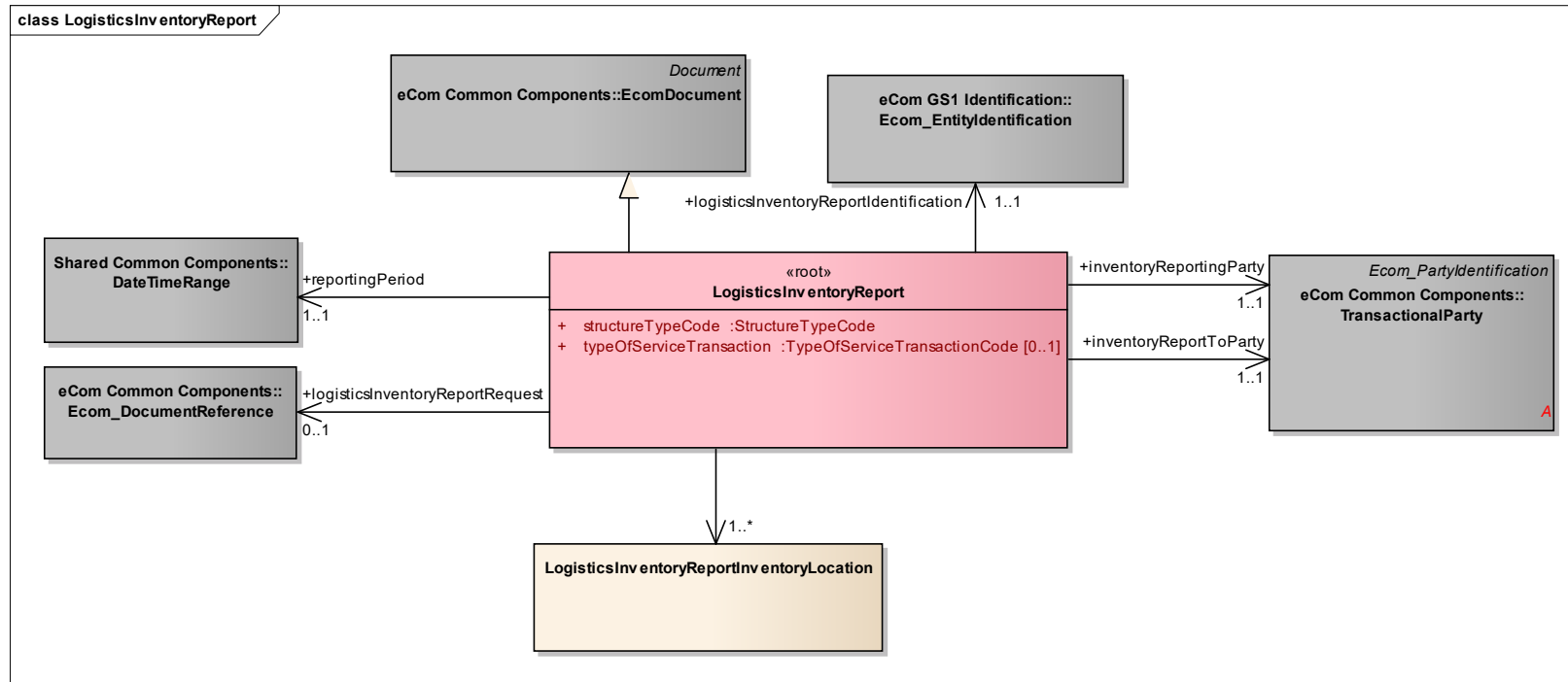
| Content                           | Attribute / Role  | Datatype / Secondary class | Multiplicity | Definition  | Requirements        |
|-----------------------------------|-------------------|----------------------------|--------------|---|---------------------|
| LogisticsInventoryRequestLocation |                   |                            |              | Contains the inventory location and related sub-locations for which inventory information is being requested. |                     |
| Association                       | inventoryLocation | TransactionalParty         | 1..1         | The inventory location for which inventory information is being requested                                     | [brad-wim:invrpr-7] |
| Association                       |                   | InventorySubLocation       | 0..*         | The inventory sub-locations for which inventory information is being requested.                               | [brad-wim:invrpr-8] |



**Note:** Reference Shared Common Library Business Message (BMS) Release 3.4 and eCom Domain Common Library Business Message (BMS) Release 3.4 for all common information.

## 4.2 Logistics Inventory Report (message)

### Class Diagram



### GDD Report

The content of the LogisticsInventoryReport class, its structure and component definitions can be accessed in the Global Data Dictionary:  
[http://apps.gs1.org/GDD/bms/Version3\\_3/Pages/bieDetails.aspx?semanticURN=urn:gs1:gdd:bie:LogisticsInventoryReportInventoryLocation](http://apps.gs1.org/GDD/bms/Version3_3/Pages/bieDetails.aspx?semanticURN=urn:gs1:gdd:bie:LogisticsInventoryReportInventoryLocation)

| Content                  | Attribute / Role | Datatype / Secondary class | Multiplicity | Definition  | Requirements |
|--------------------------|------------------|----------------------------|--------------|---|--------------|
| LogisticsInventoryReport |                  |                            |              | The Logistics Inventory Report enables a party (the inventory reporting party) to provide information on inventory levels and inventory changes to another party (the inventory report to party). |              |



| Content        | Attribute / Role                       | Datatype / Secondary class                | Multiplicity | Definition  | Requirements |
|----------------|--|---|--------------|---|--------------|
| Association    | logisticsInventoryReportIdentification | Ecom_EntityIdentification                 | 1..1         | Unique identification of the inventory report, assigned by the inventory reporting party.               |              |
| Association    | logisticsInventoryReportRequest        | Ecom_DocumentReference                    | 0..1         | Reference to the logistics inventory report request, if applicable.                                     |              |
| Association    | reportingPeriod                        | DateTimeRange                             | 1..1         | The time period for which the inventory report provides information.                                    |              |
| Association    | inventoryReportingParty                | TransactionalParty                        | 1..1         | The identification of the party reporting about the inventory.  |              |
| Association    |  | LogisticsInventoryReportInventoryLocation | 1..*         | Contains the inventory information per inventory location.  |              |
| Generalization |  | EcomDocument                              |              | Basic information about the content of the message including version number, creation date and time.    | WR 14-000110 |
| Association    | inventoryReportToParty                 | TransactionalParty                        | 1..1         | The identification of the party to which the inventory is being reported.                               |              |
| Attribute      | structureTypeCode                      | StructureTypeCode                         | 1..1         | Contains the type of sequencing of the inventory report   |              |
| Attribute      | typeOfServiceTransaction               | TypeOfServiceTransactionCode              | 0..1         | Specifies whether inventory report is generated according to schedule or triggered by a specific event. | WR 15-000046 |

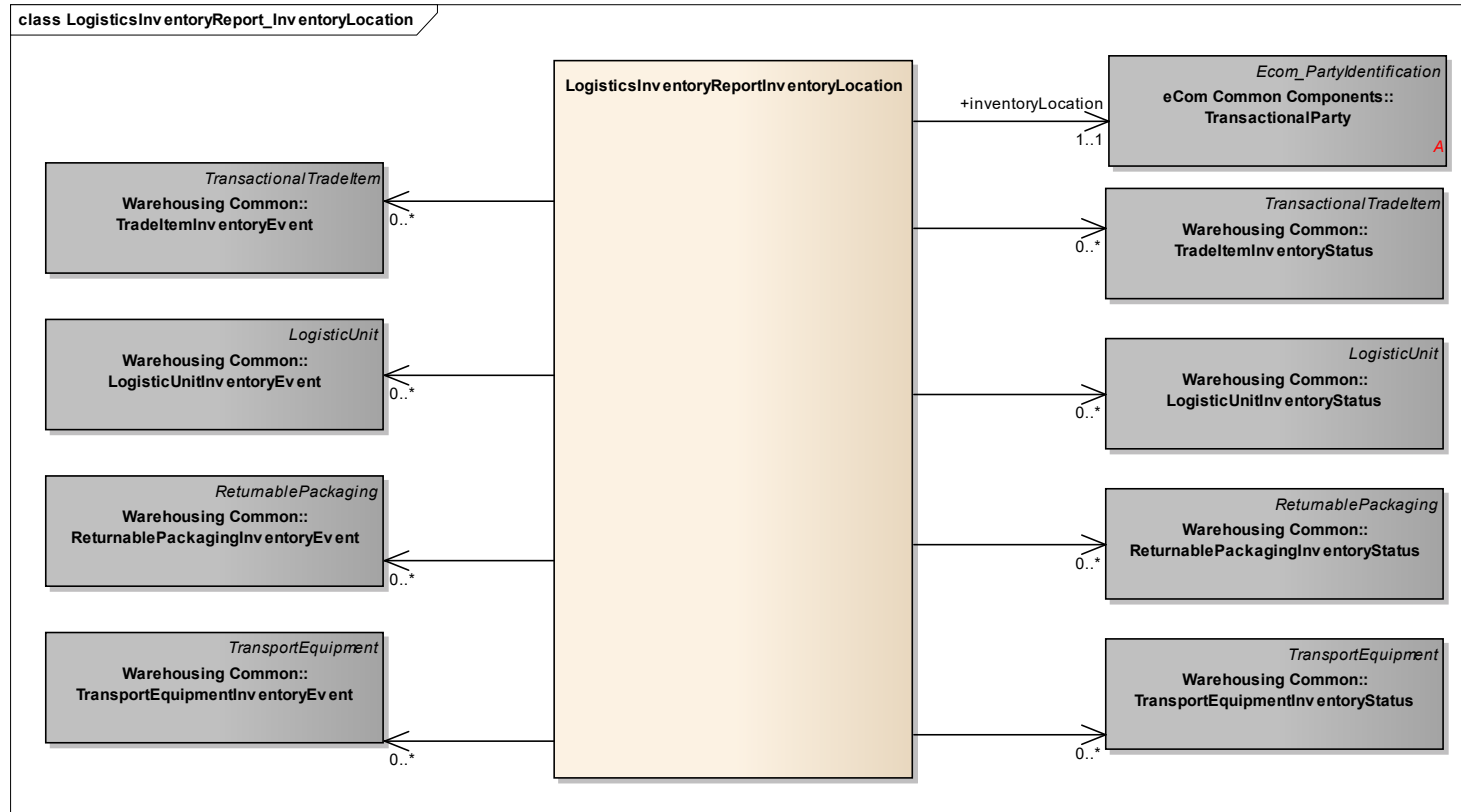


**Note:** Reference Shared Common Library Business Message (BMS) Release 3.4 and eCom Domain Common Library Business Message (BMS) Release 3.4 for all common information.



### 4.3 Logistics Inventory Report Inventory Location

#### Class Diagram





**GDD Report**

The content of the LogisticsInventoryReportInventoryLocation class, its structure and component definitions can be accessed in the Global Data Dictionary:

[http://apps.gs1.org/GDD/bms/Version3\\_3/Pages/bieDetails.aspx?semanticURN=urn:gs1:gdd:bie:LogisticsInventoryReportInventoryLocation](http://apps.gs1.org/GDD/bms/Version3_3/Pages/bieDetails.aspx?semanticURN=urn:gs1:gdd:bie:LogisticsInventoryReportInventoryLocation)

| Content                                   | Attribute / Role | Datatype / Secondary class         | Multiplicity | Definition   | Requirements                   |
|---|------------------|------------------------------------|--------------|--|--------------------------------|
| LogisticsInventoryReportInventoryLocation |                  |                                    |              | Contains the inventory information for an inventory location.  |                                |
| Association                               |                  | ReturnablePackagingInventoryStatus | 0..*         | Information specifying the inventory status of a set of returnable packaging items (of the same type) at a specific sub-location at a specific point in time.        | [brad-wim:eCom-1]              |
| Association                               |                  | LogisticUnitInventoryEvent         | 0..*         | Information specifying an inventory activity of a specific logistic unit at a specific sub-location at a specific point in time.                                     |                                |
| Association                               |                  | TransportEquipmentInventoryEvent   | 0..*         | Information specifying an inventory activity of one or more pieces of transport equipment (of the same type) at a specific sub-location at a specific point in time. | [brad-wim:eCom-1]              |
| Association                               |                  | ReturnablePackagingInventoryEvent  | 0..*         | Information specifying an inventory activity of one or more returnable packaging items (of the same type) at a specific sub-location at a specific point in time.    | [brad-wim:eCom-1]              |
| Association                               |                  | TradeItemInventoryEvent            | 0..*         | Information specifying an inventory activity of one or more trade items (of the same type) at a specific sub-location at a specific point in time.                   | [brad-wim:IR-301,302,3003,304] |
| Association                               |                  | TransportEquipmentInventoryStatus  | 0..*         | Information specifying the inventory status of a set of pieces of transport equipment (of the same type) at a specific sub-location at a specific point in time.     | [brad-wim:eCom-1]              |
| Association                               |                  | LogisticUnitInventoryStatus        | 0..*         | Information specifying the inventory status of a logistic unit at a specific sub-location at a specific point in time.   |                                |



| Content     | Attribute / Role  | Datatype / Secondary class | Multiplicity | Definition   | Requirements          |
|-------------|-------------------|----------------------------|--------------|--|-----------------------|
| Association |                   | TradeItemInventoryStatus   | 0..*         | Information specifying the inventory status of a set of trade items (of the same type) at a specific sub-location at a specific point in time. | [brad-wim:IR-100,200] |
| Association | inventoryLocation | TransactionalParty         | 1..1         | Identification of the site where the items are located.  |                       |

## 4.4 Enumerations (message specific)

### 4.4.1 LogisticsInventoryReportTypeEnumeration

| Code Value                   | Code Definition  |
|------------------------------|--|
| FULL_REPORT                  | Report containing activity and status information on multiple trade items and non-trade items. |
| FULL_STATUS_REPORT           | Report containing status information on multiple trade items and non-trade items.              |
| TRADE_ITEM_REPORT            | Report containing activity and status information on one or more trade items.                  |
| TRADE_ITEM_STATUS_REPORT     | Report containing status information on one or more trade items.                               |
| NON_TRADE_ITEM_REPORT        | Report containing activity and status information on multiple non-trade items.                 |
| NON_TRADE_ITEM_STATUS_REPORT | Report containing status information on multiple non-trade items.                              |

## 4.5 Code Lists

| Class                           | Codelist                     | GDD Link  |
|---------------------------------|------------------------------|---|
| LogisticsInventoryReport        | StructureTypeCode            | <a href="http://apps.gs1.org/GDD/Pages/clDetails.aspx?semanticURN=urn:gs1:gdd:cl:StructureTypeCode">http://apps.gs1.org/GDD/Pages/clDetails.aspx?semanticURN=urn:gs1:gdd:cl:StructureTypeCode</a>                       |
| LogisticsInventoryReportRequest | InventoryDispositionCode     | <a href="http://apps.gs1.org/GDD/Pages/clDetails.aspx?semanticURN=urn:gs1:gdd:cl:InventoryDispositionCode">http://apps.gs1.org/GDD/Pages/clDetails.aspx?semanticURN=urn:gs1:gdd:cl:InventoryDispositionCode</a>         |
| LogisticsInventoryReport        | TypeOfServiceTransactionCode | <a href="http://apps.gs1.org/GDD/Pages/clDetails.aspx?semanticURN=urn:gs1:gdd:cl:TypeOfServiceTransactionCode">http://apps.gs1.org/GDD/Pages/clDetails.aspx?semanticURN=urn:gs1:gdd:cl:TypeOfServiceTransactionCode</a> |



**Note:** Refer to the Global Data Dictionary (GDD) for the code values.





## 5 Business Message Examples

### 5.1 Example 1

This is an example of the Logistic Inventory Report message used to communicate the periodical status.

#### Party Information

| GS1 Global Location Number | Party Type                |
|----------------------------|---------------------------|
| 3333333000001              | Inventory Reporting Party |
| 2222222000004              | Report To Party           |
| 3333333000018              | Inventory Location        |

#### Message Example 1

| Attribute   | Value               |
|---|---------------------|
| <b>LogisticsInventoryReport</b>                                       |                     |
| creationDateTime  | 2012-07-11 00:00    |
| documentStatusCode  | ORIGINAL            |
| documentActionCode  | ADD                 |
| structureTypeCode   | LOCATION_BY_ITEM    |
| <b>EntityIdentification (+logisticsInventoryReportIdentification)</b> |                     |
| entityIdentification  | INVRPT-0123         |
| <b>DateTimeRange (+reportingPeriod)</b>                               |                     |
| beginDate   | 2012-07-11          |
| beginTime   | 00:00               |
| <b>TransactionalParty (+inventoryReportingParty)</b>                  |                     |
| gln   | 3333333000001       |
| <b>TransactionalParty (+inventoryReportToParty)</b>                   |                     |
| gln   | 2222222000004       |
| <b>LogisticsInventoryReportInventoryLocation</b>                      |                     |
| <b>TransactionalParty (+inventoryLocation)</b>                        |                     |
| gln   | 3333333000018       |
| <b>TradeItemInventoryStatus</b>                                       |                     |
| gtin  | 01111111001110      |
| tradeItemQuantity   | 400                 |
| inventoryDispositionCode  | sellable_accessible |
| <b>InventorySubLocation (+)</b>                                       |                     |
| glnExtension  | AB-1                |
| <b>TransactionalItemData (+)</b>                                      |                     |



| Attribute                        | Value                    |
|----------------------------------|--------------------------|
| tradeItemQuantity                | 200                      |
| batchNumber                      | bno120032                |
| <b>TransactionalItemData (+)</b> |                          |
| tradeItemQuantity                | 200                      |
| batchNumber                      | bno120033                |
| <b>TradeItemInventoryStatus</b>  |                          |
| gtin                             | 01111111001110           |
| tradeItemQuantity                | 400                      |
| inventoryDispositionCode         | NON-SELLABLE_QUARANTINED |
| <b>InventorySubLocation (+)</b>  |                          |
| glnExtension                     | AB-2                     |
| <b>TransactionalItemData (+)</b> |                          |
| tradeItemQuantity                | 200                      |
| batchNumber                      | bno120034                |
| <b>TransactionalItemData (+)</b> |                          |
| tradeItemQuantity                | 200                      |
| batchNumber                      | bno120035                |

**Message Example 1 Including Cycle Count Data:**

| Attribute                      | Value               |
|--------------------------------|---------------------|
| <b>TradeItemInventoryEvent</b> |                     |
| gtin                           | 01111111001110      |
| tradeItemQuantity              | 400                 |
| eventDateTime                  | 2012-07-11 12:20    |
| inventoryBusinessStepCode      | COUNTING            |
| inventoryDispositionCode       | SELLABLE_ACCESSIBLE |
| <b>InventorySubLocation</b>    |                     |
| glnExtension                   | AB-1                |
| <b>TradeItemInventoryEvent</b> |                     |
| gtin                           | 01111111001110      |
| tradeItemQuantity              | 399                 |
| eventDateTime                  | 2012-07-11 12:20    |
| inventoryBusinessStepCode      | COUNTING            |
| inventoryDispositionCode       | SELLABLE_ACCESSIBLE |
| <b>InventorySubLocation</b>    |                     |
| glnExtension                   | AB-2                |
| <b>TradeItemInventoryEvent</b> |                     |
| gtin                           | 01111111001110      |
| tradeItemQuantity              | 1                   |



| Attribute                   | Value                |
|-----------------------------|----------------------|
| eventDateTime               | 2012-07-11 12:20     |
| inventoryBusinessStepCode   | COUNTING             |
| inventoryDispositionCode    | NON-SELLABLE_DAMAGED |
| <b>InventorySubLocation</b> |                      |
| glnExtension                | AB-2                 |

## 5.2 Example 2

This is an example of the Logistic Inventory Request message used for adhoc query

### Party Information

| GS1 Global Location Number | Party Type                |
|----------------------------|---------------------------|
| 3333333000001              | Inventory Reporting Party |
| 2222222000004              | Report To Party           |
| 3333333000018              | Inventory Location        |

### Message Example 1

| Attribute  | Value             |
|--|-------------------|
| <b>LogisticsInventoryRequest</b>   |                   |
| creationDateTime   | 2012-07-11 00:00  |
| documentStatusCode   | ORIGINAL          |
| documentActionCode   | ADD               |
| logisticsInventoryReportTypeCode   | TRADE_ITEM_REPORT |
| <b>EntityIdentification (+logisticsInventoryReportRequestIdentification)</b> |                   |
| entityIdentification   | INVRPRQ-21        |
| <b>TransactionalParty (+inventoryReportingParty)</b>                         |                   |
| gln  | 3333333000001     |
| <b>TransactionalParty (+inventoryReportToParty)</b>                          |                   |
| gln  | 2222222000004     |
| <b>TransactionalTradeItem (+)</b>  |                   |
| gtin   | 01111111001110    |
| DateRange (+reportingPeriod)   |                   |
| beginDate  | 2012-07-01        |
| beginTime  | 00:00             |
| endDate  | 2012-08-01        |
| endTime  | 00:00             |
| <b>LogisticsInventoryRequestLocation</b>                                     |                   |
| <b>TransactionalParty (+inventoryLocation)</b>                               |                   |



| Attribute                       | Value         |
|---------------------------------|---------------|
| gln                             | 3333333000018 |
| <b>InventorySubLocation (+)</b> |               |
| glnExtension                    | AB-1          |

**Response to the request:**

| Attribute   | Value               |
|---|---------------------|
| <b>LogisticsInventoryReport</b>                                       |                     |
| creationDateTime  | 2012-07-11 00:00    |
| documentStatusCode  | ORIGINAL            |
| documentActionCode  | ADD                 |
| structureTypeCode   | LOCATION_BY_ITEM    |
| <b>EntityIdentification (+logisticsInventoryReportIdentification)</b> |                     |
| entityIdentification  | INVRPT-01256        |
| <b>TransactionalParty (+inventoryReportingParty)</b>                  |                     |
| gln   | 3333333000001       |
| <b>TransactionalParty (+inventoryReportToParty)</b>                   |                     |
| gln   | 2222222000004       |
| <b>DateTimeRange (+reportingPeriod)</b>                               |                     |
| beginDate   | 2012-07-01          |
| beginTime   | 00:00               |
| endDate   | 2012-08-01          |
| endTime   | 00:00               |
| <b>DocumentReference (+logisticsInventoryReportRequest)</b>           |                     |
| entityIdentification  | INVRPRQ-21          |
| <b>LogisticsInventoryReportInventoryLocation</b>                      |                     |
| <b>TransactionalParty (+inventoryLocation)</b>                        |                     |
| gln   | 3333333000018       |
| <b>TradeItemInventoryStatus</b>                                       |                     |
| gtin  | 01111111001110      |
| tradeItemQuantity   | 300                 |
| inventoryDispositionCode  | SELLABLE_ACCESSIBLE |
| inventoryDateTime   | 2012-08-01 00:00    |
| <b>InventorySubLocation (+)</b>                                       |                     |
| glnExtension  | AB-1                |
| <b>TransactionalItemData (+)</b>                                      |                     |
| tradeItemQuantity   | 200                 |
| batchNumber   | bno120032           |
| <b>TransactionalItemData (+)</b>                                      |                     |
| tradeItemQuantity   | 200                 |



| Attribute                            | Value               |
|--------------------------------------|---------------------|
| batchNumber                          | bn0120033           |
| <b>InventoryDutyFeeTaxStatus (+)</b> |                     |
| dutyFeeTaxTypeCode                   | IMP                 |
| customsWarehouseStatusCode           | FREE_CIRCULATION    |
| <b>TradeItemInventoryEvent</b>       |                     |
| gtin                                 | 01111111001110      |
| tradeItemQuantity                    | 200                 |
| eventDateTime                        | 2012-07-11 12:15    |
| inventoryBusinessStepCode            | STATUS_CHANGING     |
| inventoryDispositionCode             | SELLABLE_ACCESSIBLE |
| inventoryMovementTypeCode            | DECREASE            |
| <b>InventorySubLocation (+)</b>      |                     |
| glnExtension                         | AB-1                |
| <b>InventoryDutyFeeTaxStatus (+)</b> |                     |
| dutyFeeTaxTypeCode                   | IMP                 |
| customsWarehouseStatusCode           | BONDED              |
| <b>TradeItemInventoryEvent</b>       |                     |
| gtin                                 | 01111111001110      |
| tradeItemQuantity                    | 200                 |
| eventDateTime                        | 2012-07-11 12:15    |
| inventoryBusinessStepCode            | STATUS_CHANGING     |
| inventoryDispositionCode             | SELLABLE_ACCESSIBLE |
| inventoryMovementTypeCode            | INCREASE            |
| <b>InventorySubLocation (+)</b>      |                     |
| glnExtension                         | AB-1                |
| <b>InventoryDutyFeeTaxStatus (+)</b> |                     |
| dutyFeeTaxTypeCode                   | IMP                 |
| customsWarehouseStatusCode           | BONDED              |
| <b>InventorySubLocation (+)</b>      |                     |
| glnExtension                         | AB-1                |
| <b>InventoryDutyFeeTaxStatus (+)</b> |                     |
| dutyFeeTaxTypeCode                   | IMP                 |
| customsWarehouseStatusCode           | FREE_CIRCULATION    |
| <b>TradeItemInventoryEvent</b>       |                     |
| gtin                                 | 01111111001110      |
| tradeItemQuantity                    | 100                 |
| eventDateTime                        | 2012-0-21 14:15     |
| inventoryBusinessStepCode            | TRANSFERRING        |
| inventoryDispositionCode             | SELLABLE_ACCESSIBLE |
| inventoryMovementTypeCode            | INCREASE            |
| <b>InventorySubLocation (+)</b>      |                     |

| Attribute                            | Value               |
|--------------------------------------|---------------------|
| glnExtension                         | AB-1                |
| <b>InventoryDutyFeeTaxStatus (+)</b> |                     |
| dutyFeeTaxTypeCode                   | IMP                 |
| customsWarehouseStatusCode           | FREE_CIRCULATION    |
| <b>TradeItemInventoryEvent</b>       |                     |
| gtin                                 | 01111111001110      |
| tradeItemQuantity                    | 100                 |
| eventDateTime                        | 2012-07-21 13:15    |
| inventoryBusinessStepCode            | TRANSFERRING        |
| inventoryDispositionCode             | SELLABLE_ACCESSIBLE |
| inventoryMovementTypeCode            | DECREASE            |
| <b>InventorySubLocation (+)</b>      |                     |
| glnExtension                         | AB-2                |
| <b>InventoryDutyFeeTaxStatus (+)</b> |                     |
| dutyFeeTaxTypeCode                   | IMP                 |
| customsWarehouseStatusCode           | FREE_CIRCULATION    |

## 6 Implementation Considerations

### 6.1 User Guide

The Functional User Guide contains more information about the structure and content of the Logistics Inventory Report Request and Report message:

[http://www.gs1.org/docs/ecom/xml/3/3.4/eCom-Trade\\_messages.html#LogisticsInventoryReportRequestandReport](http://www.gs1.org/docs/ecom/xml/3/3.4/eCom-Trade_messages.html#LogisticsInventoryReportRequestandReport)

### 6.2 Message Specific Considerations

Not applicable.

## 7 Summary of Changes

Any change in the GS1 standards is done based on the Work Request (WR) submitted by the GS1 User Companies or Member Organisations. All Work Requests are documented in the Work Request system available on the GS1 website: <http://wr.gs1.org>. The system is accessible to registered users. New visitors need to register first, to be able to access it. WRs can be searched by the number referenced in tables below, see: Search Work Requests. The number starts with the two last digits of the year when it was submitted, followed by the consecutive number within that year.

**Note:** WRs submitted earlier than February 2012 should be searched in Old Change Requests.

### 7.1 BMS Release 3.1

First release of this message standard.

### 7.2 BMS Release 3.2

| Change  | Associated WR           |
|---|-------------------------|
| <p>Added Attribute Value Pair at the root, line item and sub line item levels</p> <pre> class LogisticsInventoryReportRequest - maintenance view     «root»     LogisticsInventoryReportRequest     + logisticsInventoryReportTypeCode :LogisticsInventoryReportTypeEnumeration     + inventoryDispositionCode :InventoryDispositionCode [0..*]     maintenance     Change: (Verified) 3.2 changed generalisation from Document to eComDocument class to include AVP (WR 14-110)                     </pre> | <p><b>14-000110</b></p> |
| <p>Added Attribute Value Pair at the root, line item and sub line item levels</p> <pre> class LogisticsInventoryReport - maintenance view     «root»     LogisticsInventoryReport     + structureTypeCode :StructureTypeCode     maintenance     Change: (Verified) 3.2 changed generalisation from Document to eComDocument class to include AVP (WR 14-110)                     </pre>  | <p><b>14-000110</b></p> |

### 7.3 BMS Release 3.3

| Change   | Associated WR  |
|--|--|
| <ul style="list-style-type: none"> <li>Created Ecom_EntityIdentification class and changed association from the previous EntityIdentification</li> <li>Created Ecom_DocumentReference class and changed association from the previous DocumentReference</li> </ul> | <p><b>15-000314</b><br/>Make GS1 identification keys optional in GS1 EDI XML</p> |
| <p>Created TypeOfServiceTransactionCode class and added TypeOfServiceTransactionCode in LogisticsInventoryReport class</p>   | <p><b>15-000314</b><br/>Make GS1 identification keys optional in GS1 EDI XML</p> |
| <p>Created Ecom_EntityIdentification class and changed association from the previous EntityIdentification</p>  | <p><b>15-000314</b><br/>Make GS1 identification keys optional in GS1 EDI XML</p> |



## 7.4 BMS Release 3.4

No work requests. Indirect changes due to upgrade to new Shared and eCom Common libraries.

## 7.5 BMS Release 3.4.1

No work requests. Indirect changes due to upgrade to new Shared and eCom Common libraries.

# 8 Appendices

Not Applicable

# 9 Acknowledgements

## 9.1 Work Group

| Function | Name                        | Company / organisation                                    |
|----------|-----------------------------|---|
| Co-chair | Rossner (Pottier), Natascha | GS1 France  |
| Co-chair | Schmidt, Tom Eric           | August Storck KG  |
| Member   | Bemrose, Jonathan           | R&R Ice Cream   |
| Member   | Bodemer, Petra              | dm-drogerie markt GmbH + Co. KG                           |
| Member   | Boikanyo, Rebone            | GS1 South Africa / Consumer Goods Council of South Africa |
| Member   | Canada, ON                  | M3B 3L1   |
| Member   | Carlson, Jim                | General Mills, Inc.                                       |
| Member   | Chresta, Richard            | GS1 Switzerland   |
| Member   | Cook, Don                   | Wal-Mart Stores, Inc.                                     |
| Member   | Cox, Marc                   | Philips Electronics N.V.                                  |
| Member   | Darnell, David              | Systrends   |
| Member   | De Flou, Nele               | GS1 Belgium & Luxembourg                                  |
| Member   | Dicks, Arne                 | GS1 Germany   |
| Member   | Duvinger, Karina            | GS1 Sweden  |
| Member   | Foerderer, Klaus            | GS1 Germany   |
| Member   | Gathmann, Stefan            | GS1 Ireland   |
| Member   | Grangard, Anders            | GS1 Global Office   |
| Member   | Harpell, Eileen             | GS1 Community Room Staff                                  |
| Member   | Hand, Phil                  | JDA Software  |
| Member   | Herregodts, Kurt            | GS1 Belgium & Luxembourg                                  |
| Member   | Kempkes, Fred               | Unilever N.V.   |
| Member   | Kernan, Brendan             | GS1 Ireland   |
| Member   | Kidd, Robin                 | Nestle  |
| Member   | Krid, Anne-Claire           | GS1 France  |
| Member   | Lanoue, Tom                 | General Mills, Inc.                                       |
| Member   | Laur, Rita                  | GS1 Canada  |
| Member   | Lenman, Mia                 | GS1 Sweden  |



| Function | Name                     | Company / organisation            |
|----------|--------------------------|-----------------------------------|
| Member   | Lerch, Hanjoerg          | METRO Group                       |
| Member   | Moberg, Dale             | Axway                             |
| Member   | Montes de Oca, Alejandra | GS1 Mexico                        |
| Member   | Ng, Ella                 | GS1 Australia                     |
| Member   | Peelen, Esther           | GS1 Netherlands                   |
| Member   | Pelekies, Andreas        | GS1 Germany                       |
| Member   | Perrier, Patricia        | GS1 France                        |
| Member   | Przybilla, Christian     | GS1 Germany                       |
| Member   | Pujol, Xavier            | GS1 Spain                         |
| Member   | Racek, Greg              | Wal-Mart Stores, Inc.             |
| Member   | Repetto, Mirko           | GS1 Italy                         |
| Member   | Robba, Steven            | 1WorldSync Holdings, Inc.         |
| Member   | Rosell, Pere             | GS1 Spain                         |
| Member   | Rosenberg, Steven        | GS1 US                            |
| Member   | Schmid, Sue              | GS1 Australia                     |
| Member   | Schneider, Christian     | GS1 Switzerland                   |
| Member   | Sehorz, Eugen            | GS1 Austria                       |
| Member   | Sharma, Vishal           | General Mills, Inc.               |
| Member   | Shimazaki, Ayako         | GS1 Japan                         |
| Member   | Sion, Emilie             | GS1 France                        |
| Member   | Souza, Nadia             | GS1 Brasil                        |
| Member   | Strand, Roman            | GS1 Germany                       |
| Member   | Tan, Milton              | GS1 Malaysia                      |
| Member   | Tompsett, Simon          | Waitrose                          |
| Member   | Trelle, Ute              | 1WorldSync Holdings, Inc.         |
| Member   | Tse, Steve               | GS1 Hong Kong                     |
| Member   | Tyson, Betty             | Knouse Foods Cooperative, Inc     |
| Member   | Van den Bergh, Senne     | GS1 Belgium & Luxembourg          |
| Member   | Van der Eijk, Pim        | OASIS - Sonnenglanz Consulting BV |
| Member   | Veldhuis, Saskia         | Procter & Gamble Co.              |
| Member   | Welch, Shan              | GS1 UK                            |
| Member   | Westerkamp, Jan          | GS1 Netherlands                   |
| Member   | Wilson, Mary             | GS1 US                            |
| Member   | Windsperger, Bekki       | Best Buy Co., Inc.                |
| Member   | Yang, Shaopeng           | GS1 China                         |
| Member   | Yusdiar, Dani            | GS1 Indonesia                     |
| Member   | Zwanziger, Greg          | SUPERVALU                         |



## 9.2 Development Team Members

| Function                   | Name                              | Organisation      |
|----------------------------|-----------------------------------|-------------------|
| GSMP Process Lead          | Jean-Luc Champion and Tasha Wiehe | GS1 Global Office |
| Technical Development Lead | Ewa Iwicka                        | GS1 Global Office |
| Peer Review                | Mark Van Eeghem                   | GS1 Global Office |